



**India Meteorological Department
(Ministry of Earth Sciences)**

BULLETIN Number: 01 (BOB/03/2021)

TIME OF ISSUE: 2100 HOURS IST

DATED: 12.09.2021

FROM: INDIA METEOROLOGICAL DEPARTMENT (FAX NO. 24643965/24699216/24623220)

**TO: CONTROL ROOM, NDM, MINISTRY OF HOME AFFAIRS (FAX.NO. 23093750)
CONTROL ROOM NDMA (FAX.NO. 26701729)
CABINET SECRETARIAT (FAX.NO.23012284, 23018638)
PS TO HON'BLE MINISTER FOR S & T AND EARTH SCIENCES (FAX NO.23316745)
SECRETARY, MOES, (FAX NO. 24629777)
H.Q. (INTEGRATED DEFENCE STAFF AND CDS) (FAX NO. 23005137/23005147)
DIRECTOR GENERAL, DOORDARSHAN (23385843)
DIRECTOR GENERAL, AIR (23421105, 23421219)
PIB MOES (FAX NO. 23389042)
UNI (FAX NO. 23355841)
D.G. NATIONAL DISASTER RESPONSE FORCE (NDRF) (FAX NO. 26105912, 2436 3260)
DIRECTOR, PUNCTUALITY, INDIAN RAILWAYS (FAX NO. 23388503)
CHIEF SECRETARY, GOVT. OF ODISHA (FAX NO. 0674 -2536660)
CHIEF SECRETARY, GOVT. OF WEST BENGAL (FAX NO. 033-22144328)
CHIEF SECRETARY, ANDAMAN & NICOBAR ISLANDS (FAX NO. 03192- 232656)
CHIEF SECRETARY, ANDHRA PRADESH (FAX NO. 0863-2441029, 08645-246600)
CHIEF SECRETARY, JHARKHAND (FAX NO. 0651-2400255)
CHIEF SECRETARY, TELANGANA (FAX NO. 040-23453700)
CHIEF SECRETARY, CHATTISGARH (FAX NO 0771-2221206)
CHIEF SECRETARY, GOA (FAX NO. 0832-2415201)
CHIEF SECRETARY, MAHARASHTRA (FAX NO. FAX NO. 022- 22028594)
CHIEF SECRETARY, GUJARAT (FAX NO. 079-23250305)
CHIEF SECRETARY, MADHYA PRADESH (FAX NO. 0755-2441076)**

Sub: Depression over northwest Bay of Bengal and adjoining Odisha coast

Latest satellite & Radar imageries and meteorological observations indicate that a Depression has formed over northwest Bay of Bengal & adjoining Odisha coast and lay centred at 1730 hrs IST of today, the 12th September, 2021, near latitude 20.3°N and longitude 87.4°E, about 80 km east-southeast of Chandbali (Odisha), 70 km east of Paradip (Odisha) and 140 km south-southeast of Balasore (Odisha).

It is very likely to move west-northwestwards and cross north Odisha coast near Chandbali by early morning of tomorrow, the 13th September 2021. Thereafter, it is very likely to continue to move west-northwestwards across north Odisha, north Chhattisgarh & Madhya Pradesh during the subsequent 48 hours.

Warnings:

(i) Rainfall

- Light to moderate rainfall at most places with heavy to very heavy rainfall at a few places & extremely heavy falls at isolated places very likely over Odisha during tonight as well as tomorrow, the 13th Sept. and over Chhattisgarh on 13th Sept.
- Light to moderate rainfall at many places with isolated heavy to very heavy falls very likely over north coastal Andhra Pradesh on 12th & 13th, Gangetic West Bengal, Jharkhand and Telangana on 13th, Madhya Pradesh on 13th & 14th September.

- Light to moderate rainfall at most places with heavy to extremely heavy falls at isolated places also very likely over north Konkan, north Madhya Maharashtra and Vidarbha on 13th Sept and heavy to very heavy falls over Gujarat State, north Konkan, north Madhya Maharashtra & Vidarbha on 14th Sept.

(ii) Wind warning

- Squally wind speed reaching 45-55 kmph to gusting 65 kmph very likely over north & adjoining westcentral Bay of Bengal and along & off Odisha, West Bengal and North Andhra Pradesh coasts during tonight and tomorrow, the 13th Sept.

(iii) Sea condition

- Sea condition will be rough to very rough over north & adjoining westcentral Bay of Bengal and along & off Odisha, West Bengal & North Andhra Pradesh coasts during tonight and tomorrow, the 13th Sept.

(iv) Fishermen Warning

- The fishermen are advised not to venture into north & adjoining westcentral Bay of Bengal and along & off Odisha, West Bengal & North Andhra Pradesh coasts during tonight and tomorrow, the 13th Sept.

(v) EXPECTED IMPACT & ACTION SUGGESTED due to very Heavy/Extremely heavy Rainfall over Odisha & Chhattisgarh on 12th & 13th, Madhya Pradesh on 14th, north Konkan, Madhya Maharashtra and Vidarbha during 12th-14th September 2021.

A. Impact Expected

- Localized Flooding of roads, inundation and water logging in low lying areas and closure of underpasses mainly in urban areas of the above region.
- Occasional reduction in visibility due to heavy rainfall.
- Disruption of traffic in major cities due to water logging in roads leading to increased travel time.
- Minor damage to kutch roads. Possibilities of damage to vulnerable structure.
- Localized Landslides/Mudslides
- Damage to horticulture and standing crops in some areas due to inundation and strong winds.
- It may lead to riverine flooding in some river catchments (for riverine flooding please visit Web page of CWC)

B. Action Suggested

- Check for traffic congestion on your route before leaving for your destination.
- Follow any traffic advisories that are issued in this regard.
- Avoid going to areas that face the water logging problems often.
- Avoid staying in vulnerable structure.
- Follow IMD warnings for updates

The next bulletin will be issued at 0230 hrs IST of 13thSeptember, 2021.

(R.K. Jenamani)
Scientist-F, RSMC, New Delhi

Copy to: ACWC Kolkata/ Chennai/Mumbai CWC Bhubaneswar/CWC Visakhapatnam/CWC Ahmedabad/ MC Ranchi/MC Hyderabad/MC Raipur/MC Goa/MC Bhopal

LEGEND: Heavy Rainfall: 64.5 to 115.5mm, **Very Heavy Rainfall:** 115.6 to 204.4mm, **Extremely Heavy Rainfall:** 204.5mm or more. **Many Places:** 51% to 75% of the stations, **Most Places:** more than 76% of total stations, **Isolated Places:** Less than 25% of total stations



OBSERVED AND FORECAST TRACK OF DEPRESSION OVER NORTHWEST BAY OF BENGAL BASED ON 1200 UTC OF 12TH SEPTEMBER, 2021



DATE/TIME IN UTC
IST=UTC + 0530
L: LOW PRESSURE AREA
WML: WELL MARKED LOW PRESSURE AREA
D: DEPRESSION (17-27 KT)
DD: DEEP DEPRESSION (28-33 KT)
CS: CYCLONIC STORM (34-47 KT)
SCS: SEVERE CYCLONIC STORM (48-63KT)
VSCS: VERY SEVERE CYCLONIC STORM (64-89 KT)
ESCS: EXTREMELY SEVERE CYCLONIC STORM (90-119 KT)
SuCS: SUPER CYCLONIC STORM (\geq 120 KT)

-  LESS THAN 34 KT
-  34-47 KT
-  \geq 48 KT
-  OBSERVED TRACK
-  FORECAST TRACK
-  CONE OF UNCERTAINTY

SAT : INSAT-3D IMG

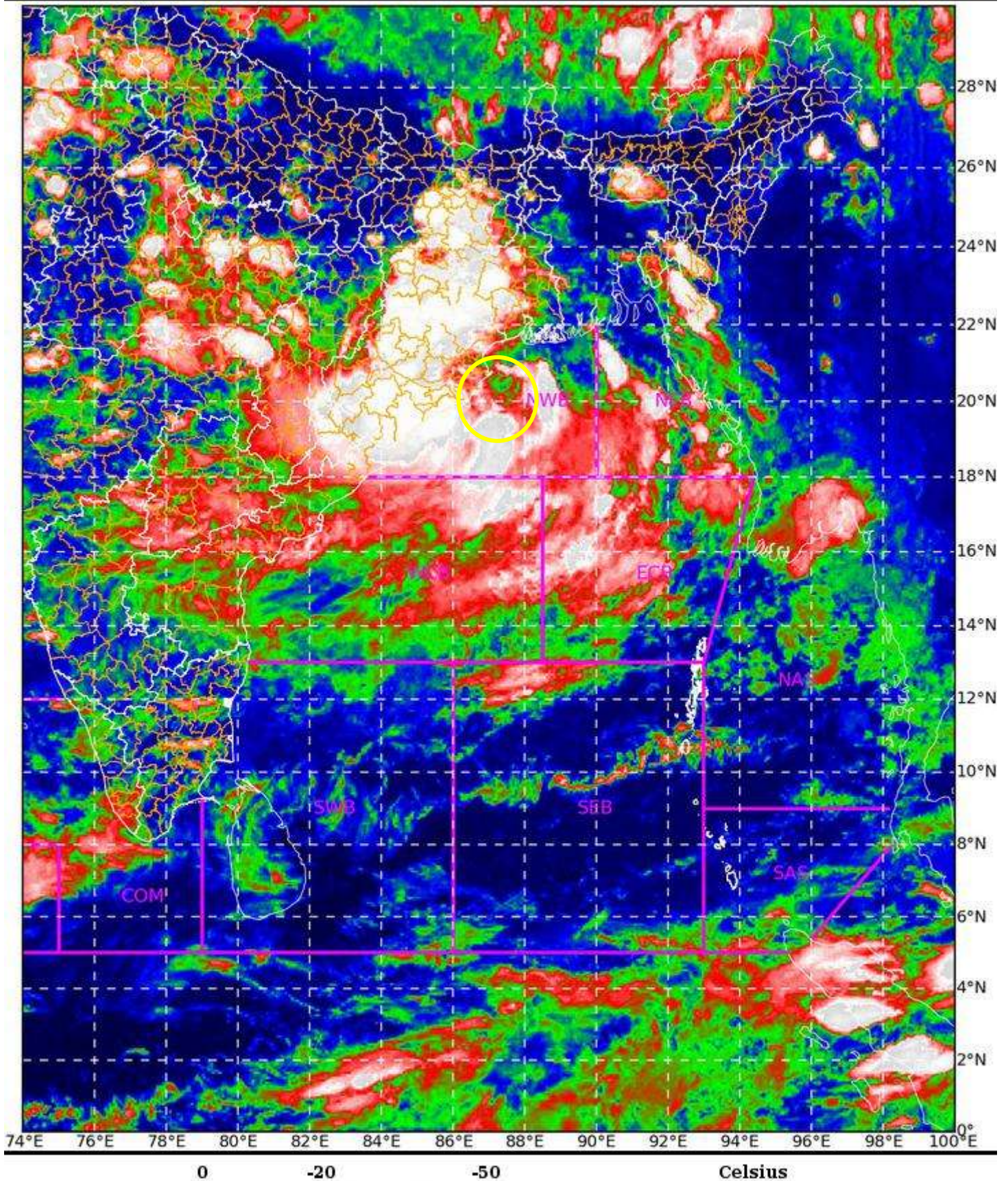
12-09-2021/(1300 to 1326) GMT

IMG_TIR1_TEMP 10.8 um

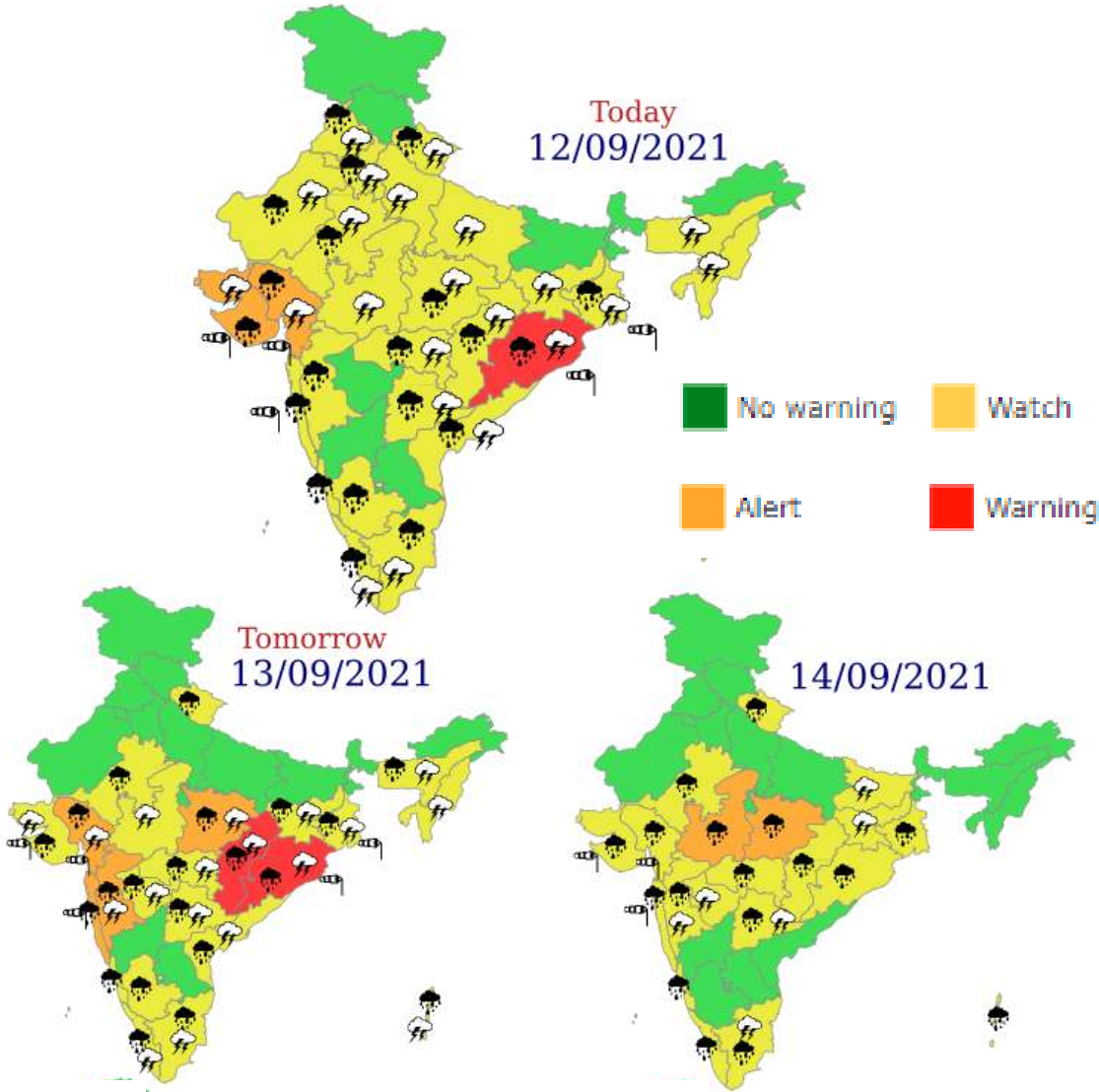
12-09-2021/(1830 to 1856) IST

L1C Mercator

DEPRESSION 20.3N/87.4E



Meteorological Sub-division level heavy rainfall warning



District level heavy rainfall warning

